



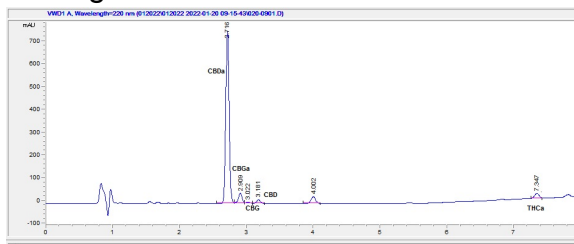
Sundae Driver

Sample Submitted: 01-20-2022; Report Date: 01-22-2022

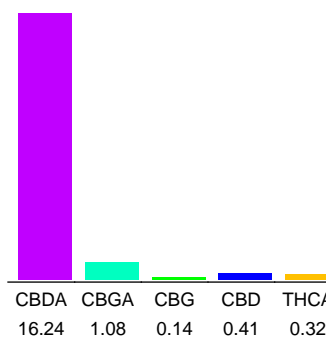
## Sundae Driver

Plant Material: Flower

### Chromatogram



### Cannabinoid Profile



### Cannabinoid Profile by HPLC

**0.28%**  
Calculated THC Yield

**14.65%**  
Calculated CBD Yield

**18.19%**  
Total Cannabinoids

Cannabinoid	% wt	mg/g
CBDA	16.24	162.4
CBGA	1.08	10.8
CBG	0.14	1.4
CBD	0.41	4.1
THCA	0.32	3.2
<b>Total Cannabinoids</b>	<b>18.19</b>	<b>181.9</b>
<b>Calculated THC Yield</b>	<b>0.28</b>	<b>2.81</b>
<b>Calculated CBD Yield</b>	<b>14.65</b>	<b>146.52</b>

Calculated Maximum THC Yield = THC + 0.877 \* THCA  
 Calculated Maximum CBD Yield = CBD + 0.877 \* CBDA

**Marin Analytics, LLC**  
 250 Bel Marin Keys Blvd, Suite D4  
 Novato, CA 94949  
 415-936-6477 / sarabiancalana1@gmail.com

*Sara Biancalana*  
**Sara Biancalana**  
 Chief Scientist

This sample has been tested by Marin Analytics, LLC using valid testing methodologies and a quality system. Values reported relate only to the sample tested. Marin Analytics, LLC makes no claims as to the efficacy, safety or other risks associated with any detected or non-detected levels of any compounds reported herein. This Certificate shall not be reproduced except in full, without the written approval of Marin Analytics, LLC.